

HEAVY
DUTY

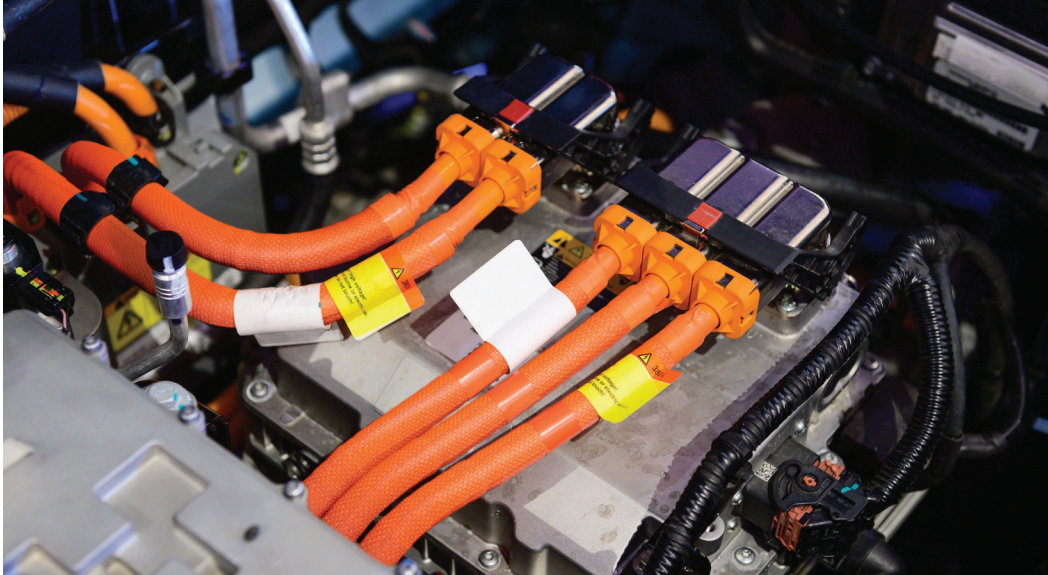


F6® Battle Wrap - Wrappable Cut-Through Protection

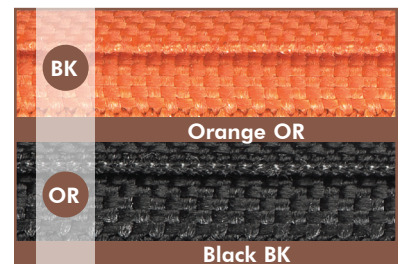
F6® Battle Wrap incorporates the superior protection of its predecessor, Battle Braid®, with the wrap-around design and easy application of the legendary F6® split tube. This heavy duty, wrap-around, cut resistant sleeving is designed to guard wire and cable assemblies from significant impacts and punctures. It is an obvious choice for the automotive industry, with durable polyester construction that absorbs and dissipates energy to offer superior crush and abrasion protection, plus limit the exposure of brake lines and wire harnesses to extreme environments.

F6® Battle Wrap sleeving is also suitable for EV manufacturers, providing power cable protection and easy identification to emergency crews in a crash situation. Its construction makes F6® Battle Wrap a great choice for assembly, as well as for maintenance and repairs, with no need to disassemble a harness.

- **400,000+ Cycles***
- **Impact Resistant**
- **Dynamic Cut Through Resistance >330 lbs. (ASTM D3032-22)**
- **Prevents UV, Gas, & Chemical Damage**
- **Self Extinguishing SAEJ369**
- **Automotive Fluid And Chemical Resistance**



Nominal Size	Part #	Wall Thickness	Standard Spool Put-Ups		Available Colors	Lbs/100'
			Box A	Box B		
3/8"	B6W0.38	.05"	50'	25'	BK & OR	4.50
1/2"	B6W0.50	.05"	50'	25'	BK & OR	5.50
5/8"	B6W0.63	.05"	50'	25'	BK & OR	6.10
3/4"	B6W0.75	.06"	50'	25'	BK & OR	8.20
1"	B6W1.00	.06"	50'	25'	BK & OR	10.40
1 1/4"	B6W1.25	.06"	50'	25'	BK & OR	12.60



Abrasion Resistance						
950	2,500	3,500	4,400	8,500	13,000	*400,000+
HIGH				EXTREMELY HIGH!!!		

1 (833) SLEEVING
www.techflex.com