



The Ultimate Termination Solution For Flexo Sleeving

Our new patented Flexo® Mounting System (FMS) has been created to attractively terminate applications with a secure mountable end. This new Mounting System is engineered to work great with Flexo® PET 1½" & 1¾", (pg. 6) and with Flexo® Clean Cut 1½" (pg. 13).

The installer friendly part clamps securely onto the sleeve without attaching to your wiring for ideal strain relief. The two piece construction removes any limitations in size created by large connectors and preserves the sleeving expandability.

Automotive grade glass filled nylon construction is suitable for a variety of applications.

At the heart of the FMS is the Snap Ring Collar. When used in conjunction with the pressure ring it permanently holds the sleeve in place.

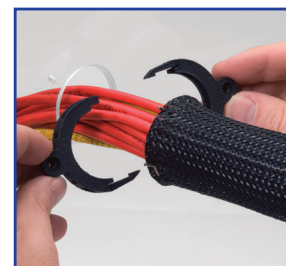


When used in conjunction with the Techflex® wall plate, the FMS creates a lasting terminated assembly.

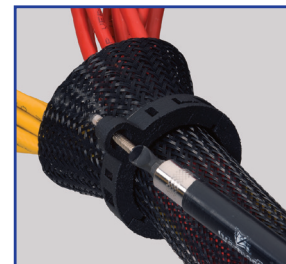


Patent # US 8,157,820 B1

Easy Field Installation



Universal Screw Mount



Easy Clip, No Special Tool Required



Fits In Single Gang Wall Box



Super Strong Strain Relief For Your Wires



Part #	Description	Available Colors	Lbs/Pkg.
FMS1.50FL	Packaging of a Single Flange	Black (BK)	0.03
FMS1.50FL5	Packaging of 5 Pc. Flange	Black (BK)	0.15
FMP1.50PLATE	Wall Plate only (includes 2 screws)	Black (BK), Almond (BE) & White (WH)	0.09
FMS1.50FK	Finishing Pack: 1 Flange & 1 Wall Plate	Black (BK), *Almond (BE) & *White (WH) (*Plate only)	0.12

1 (833) SLEEVING
www.techflex.com